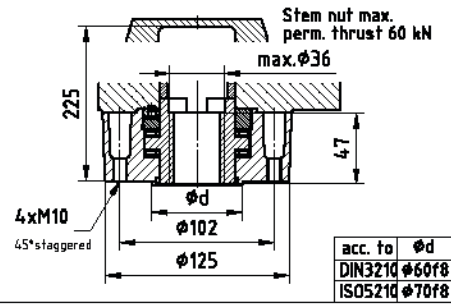
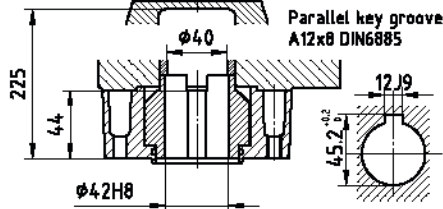


Output Drives
 Mounting Dimension F10 acc. to ISO5210
 or. G0 acc. to DIN3210

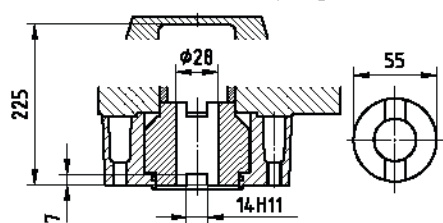
Version A with stem nut



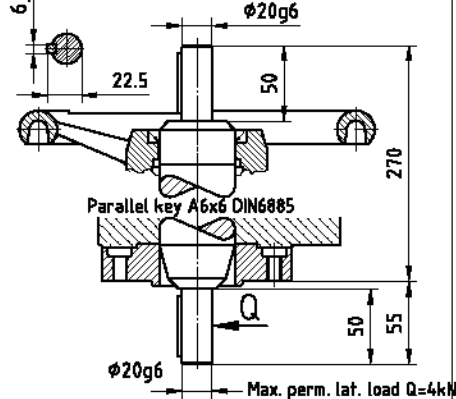
Version B with plug sleeve



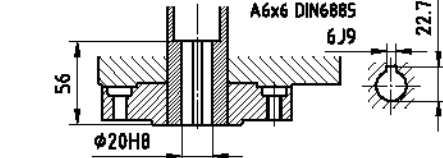
Version C with claw coupling



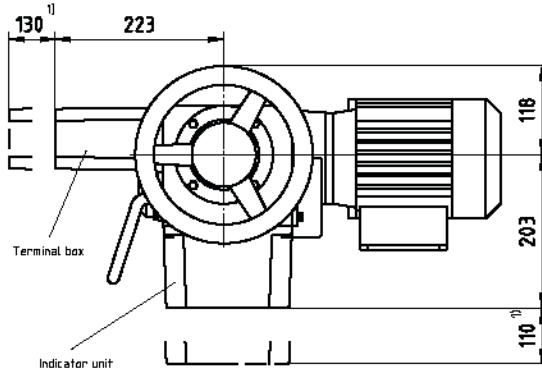
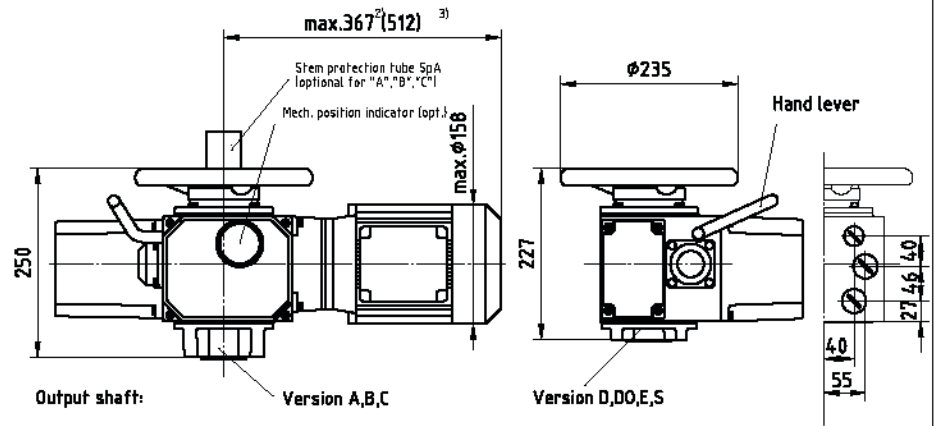
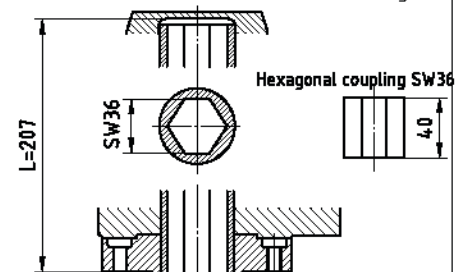
Version D with one shaft end
 resp. D0 with two shaft end



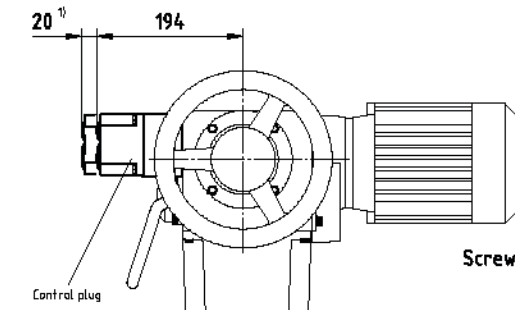
Version E with bore



Version S shaft with internal hexag. bore

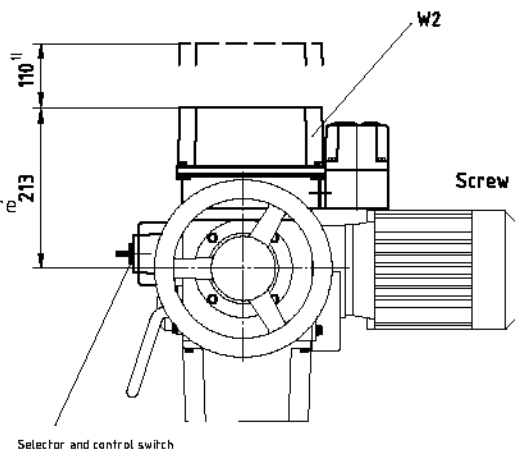


Screw plugs (cable gland): 2xM32x1,5; 1xM25x1,5



Control plug version
 32 pole plug (with threaded terminal ends)
 for control- and indication unit
 Motor wiring to control plug

Screw plugs (cable gland): 2xM32x1,5; 1xM20x1,5



with selector- and control switch
 32 pole plug (with threaded terminal ends)
 for control- and indication unit

Screw plugs (cable gland): 2xM32x1,5; 1xM20x1,5

¹⁾ Space required for removing cover (plug)

²⁾ Standard motor without brake

³⁾ Pole change motor with brake

Dimensions

Rotary Actuator

26.7.99

Genmak Makina