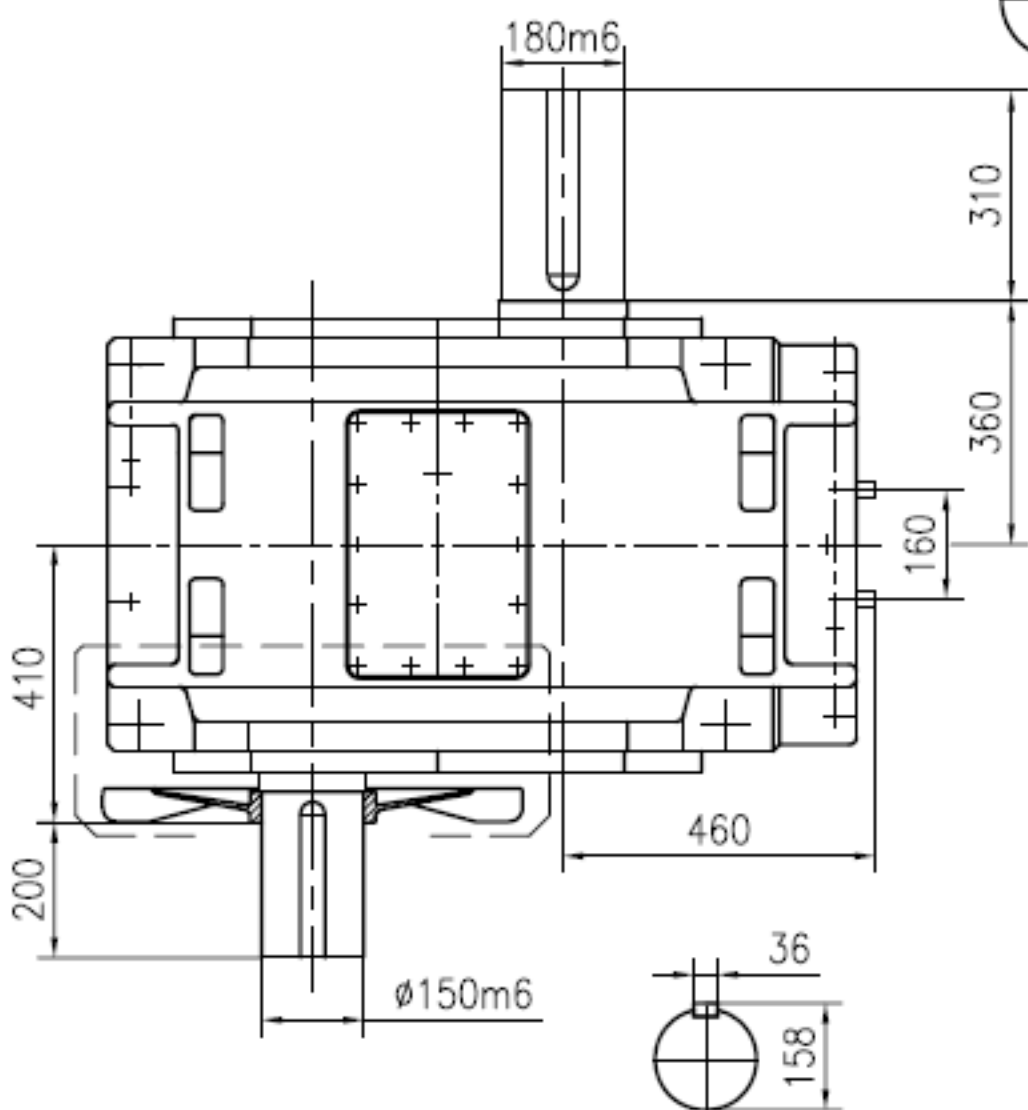
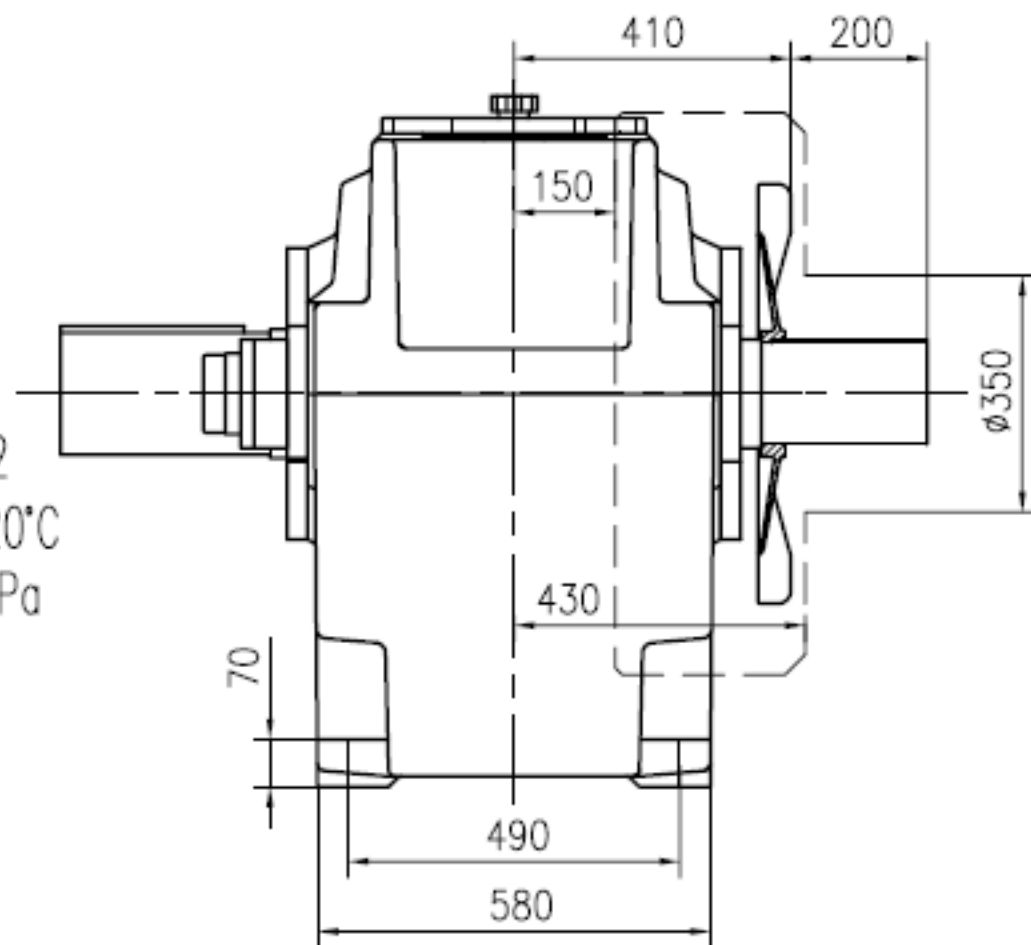
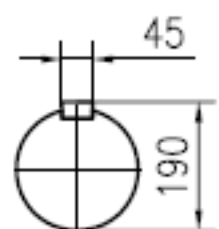


Cooling coil connect G1/2
 inlet water temperature $\leq 20^{\circ}\text{C}$
 Inlet water pressure $\leq 0.8\text{MPa}$
 Inlet water rate 8L/min



- 1.Type: H13-1.6-A+F21+C21;
- 2.Exact ratio:1.588;
- 3.Rated input power: $P_{1N}=4234\text{KW}$ ($n_1=960\text{rpm}$ 时),
- 4.Rated output torque: $T_{2N}=67.4\text{KNm}$;
- 5.Rated thermal capacity: $P_{GD}=3133\text{KW}$;
- 6.Lubrication:L-CKD320.

Genmak Makina		H H13-1.6-A+F21+C21	
		Gear Unit	
	01	1:12	