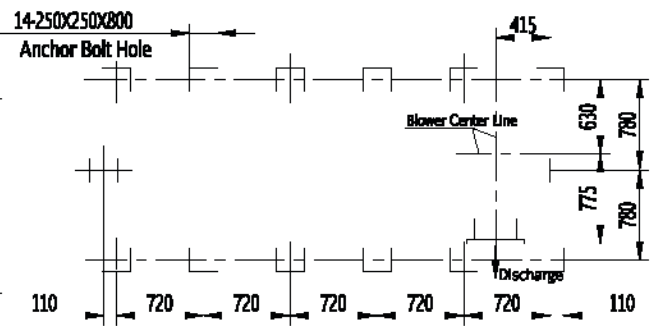


Fan Used in Sound Enclosure :
 1.5kW, 380V, 8513m³/h, 3/SET.

- Show that the support made by the user
- The user embedded cable inlet
- The user enlance the bend pipe with sound-absorbing material

Anchor Bolt Hole Arrangement Diagram



Lubrication Oil

Lubrication	Shell DELO Heavy Media (S1V68) OR: Shell DELO
Master Oil Level	60L
Secondary Oil Level	26L

Roots Blower Data

Inlet Temperature t_s	20°C
Inlet Pressure P_s	101.33kPa ABS
Discharge Pressure P_d	199.33kPa ABS
Pressure Rise Δp	98kPa
Inlet Capacity Q_s	206m ³ /min
Speed n	730r/min
Static Load Unit	14800kg
Dynamic Load Unit	29600kg
Cooling Water Inlet Pressure	196~294kPa
Cooling Water Inlet Capacity	20~25 L/min
Cooling Water Inlet Temperature	≤25°C
Fouling Resistance	≤0.0002h ⁻¹ °C·m ² /kcal

Type	RRG-350
User	